

# Massachusetts Cultural Resource Information System

## Scanned Record Cover Page

<b>Inventory No:</b>	CON.24
<b>Historic Name:</b>	Consolidated Gas Company Building
<b>Common Name:</b>	
<b>Address:</b>	37 Main St 13-15 Walden St
<b>City/Town:</b>	Concord
<b>Village/Neighborhood:</b>	Concord Center
<b>Local No:</b>	H9-833
<b>Year Constructed:</b>	r 1935
<b>Architect(s):</b>	Little, Harry Britton
<b>Architectural Style(s):</b>	Colonial Revival
<b>Use(s):</b>	Business Office; Commercial Block
<b>Significance:</b>	Architecture; Commerce
<b>Area(s):</b>	CON.DU: Main Street Historic District
<b>Designation(s):</b>	Local Historic District (03/12/1962)
<b>Building Materials(s):</b>	Wall: Brick; Wood Foundation: Brick



The Massachusetts Historical Commission (MHC) has converted this paper record to digital format as part of ongoing projects to scan records of the Inventory of Historic Assets of the Commonwealth and National Register of Historic Places nominations for Massachusetts. Efforts are ongoing and not all inventory or National Register records related to this resource may be available in digital format at this time.

The MACRIS database and scanned files are highly dynamic; new information is added daily and both database records and related scanned files may be updated as new information is incorporated into MHC files. Users should note that there may be a considerable lag time between the receipt of new or updated records by MHC and the appearance of related information in MACRIS. Users should also note that not all source materials for the MACRIS database are made available as scanned images. Users may consult the records, files and maps available in MHC's public research area at its offices at the State Archives Building, 220 Morrissey Boulevard, Boston, open M-F, 9-5.

Users of this digital material acknowledge that they have read and understood the MACRIS Information and Disclaimer (<http://mhc-macris.net/macrisdisclaimer.htm>)

Data available via the MACRIS web interface, and associated scanned files are for information purposes only. THE ACT OF CHECKING THIS DATABASE AND ASSOCIATED SCANNED FILES DOES NOT SUBSTITUTE FOR COMPLIANCE WITH APPLICABLE LOCAL, STATE OR FEDERAL LAWS AND REGULATIONS. IF YOU ARE REPRESENTING A DEVELOPER AND/OR A PROPOSED PROJECT THAT WILL REQUIRE A PERMIT, LICENSE OR FUNDING FROM ANY STATE OR FEDERAL AGENCY YOU MUST SUBMIT A PROJECT NOTIFICATION FORM TO MHC FOR MHC'S REVIEW AND COMMENT. You can obtain a copy of a PNF through the MHC web site ([www.sec.state.ma.us/mhc](http://www.sec.state.ma.us/mhc)) under the subject heading "MHC Forms."

Commonwealth of Massachusetts  
Massachusetts Historical Commission  
220 Morrissey Boulevard, Boston, Massachusetts 02125  
[www.sec.state.ma.us/mhc](http://www.sec.state.ma.us/mhc)

This file was accessed on: Friday, October 30, 2020 at 11:12 AM

## FORM B - BUILDING

Assessor's number

USGS Quad

Area(s)

Form Number

Massachusetts Historical Commission  
80 Boylston Street  
Boston, Massachusetts 02116

H9-833

CONCORD

DU

24

Town

CONCORD

SELT B

NOV 17 1992

neighborhood or village)

Concord Center PD

37 Main St or

13/15 Walden Street

S

Consolidated Gas Company

ic Name

Present

commercial

Original

commercial

f Construction

1930's

P

maps; style

Form

Colonial Revival

ect/Builder

Harry Little

Exterior Material:

Foundation

brick

Wall/Trim

brick

Roof

(not visible)

Outbuildings/Secondary Structures

none

Major Alterations (with dates)

none

Condition

excellent

Moved ☒ no ☐ yes

Date N/A

Acreage

less than one acre

Setting

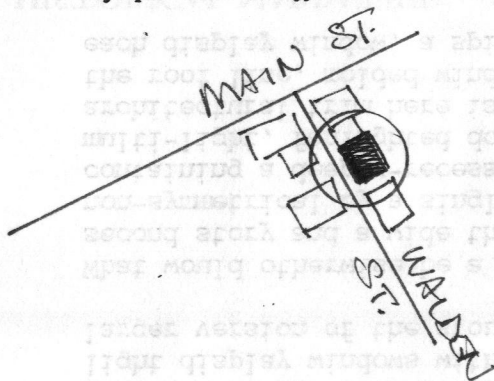
In commercial district,

in line of 19th-early 20th-century

store blocks of varying design.

## Sketch Map

Draw a map of the area indicating properties within it. Number each property for which individual inventory forms have been completed. Label streets including route numbers, if any. Attach a separate sheet if space is not sufficient here. Indicate North.



Recorded by

Anne Forbes

Organization

for Concord Hist. Commission

Date (month/day/year)

July, 1992

ARCHITECTURAL DESCRIPTION ☐ see continuation sheet

*Describe architectural features. Evaluate the characteristics of this building in terms of other buildings within the community.*

One of the later buildings constructed in the commercial area of Concord center, this is significant as one of several in the area designed or remodeled by local architect Harry Little. It is a two-story brick structure with a flat roof. Many of the details here echo features that Little employed in his other nearby buildings. Both the parapet balustrade of brick sections alternating with spindlework and the broken triangular pediment at the main entry also appear at the Middlesex Savings Bank, and the multi-light display windows with classical pilaster trim and double-leaf recessed entry are a larger version of the storefront composition at #42/44 Main Street.

What would otherwise be a symmetrical facade of four 6-over-6-sash windows at the second story and a wide three-part store front at the first is rendered highly non-symmetrical by a single bay at the south end--windowless at the second story, and containing a deeply-recessed arched entry at the first. This entry has a single multi-light, fanlight door; that at the main entry is also fanlighted. The architectural trim here is all executed in wood, and includes a wide molded cornice at the roof line, molded window surrounds, Tuscan pilasters at the storefront, and under each display window, a spindle rail that echoes the parapet detail.

HISTORICAL NARRATIVE ☐ see continuation sheet

*Discuss the history of the building. Explain its associations with local (or state) history. Include uses of the building, and the role(s) the owners/occupants played within the community.*

#13/15 Walden Street was built in the 1930's for the Consolidated Gas Company, and is one of several buildings on lower Main and Walden Streets designed or remodeled by architect Harry Little.

The building occupies the site of what may have been one of the few structures on Walden Street built by the Milldam Company after it drained and filled in the area of the old mill pond in 1828. By the 1870's it was rented out as a double tenement house by the Conant family of Nine Acre Corner. In 1894 Horatio Richardson, owner of 37-41 Main/1-5 Walden Street, acquired the property, and the next year he constructed the brick block at #7-11 Walden. In 1897 he extended the front of the old Conant house to the street line and converted it to a double store block. Among its occupants were a jeweler/watchmaker, a Chinese laundry, and a print shop.

BIBLIOGRAPHY and/or REFERENCES ☐ see continuation sheet

Keyes/Tolman.  
Concord directories.  
Harry Little's Concord.  
Sanborn maps from 1942.

☐ Recommended for listing in the National Register of Historic Places. If checked, you must attach a completed National Register Criteria Statement form.